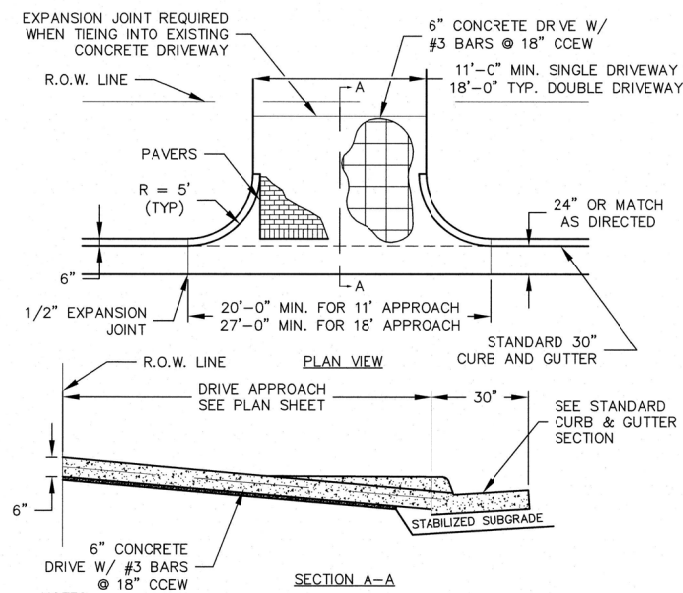


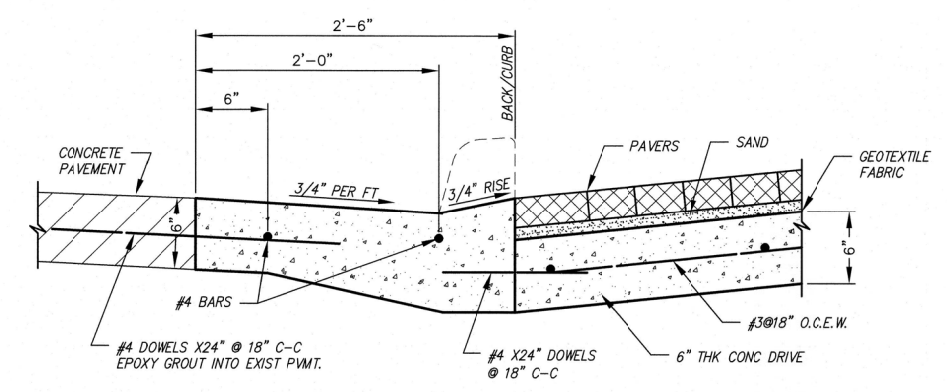
Drawing: T:\Projects\WRH22016\Eng-C30\Drawings\Details\DRIVEWAY\DRIVEWAY DETAILS.dwg of Jan 31, 2022 - 3:38pm by pjonas  
 Layout: Layout1.dwg  
 Xrefs: asst-03.dwg



- NOTES:
- #4 DOWEL BARS AT 18" C-C SHALL BE USED WHEN CONNECTING TO EXISTING SIDEWALKS DRIVEWAYS, CURB AND GUTTER.
  - EXISTING CURB AND GUTTER, IF ANY, SHALL BE SAW CUT AS DIRECTED BY THE CITY ENGINEER.
  - SIDEWALK SECTION THRU DRIVEWAY TO BE POURED SAME THICKNESS AS DRIVEWAY APPROACH AND PAID FOR AS DRIVEWAY APPROACH. (EXISTING SIDEWALK, IF ANY, TO BE REMOVED AND REPLACED.)
  - STANDARD RETURN RISE IS 7.25" AT 6" AND 5.25" AT 4" CURE SECTION

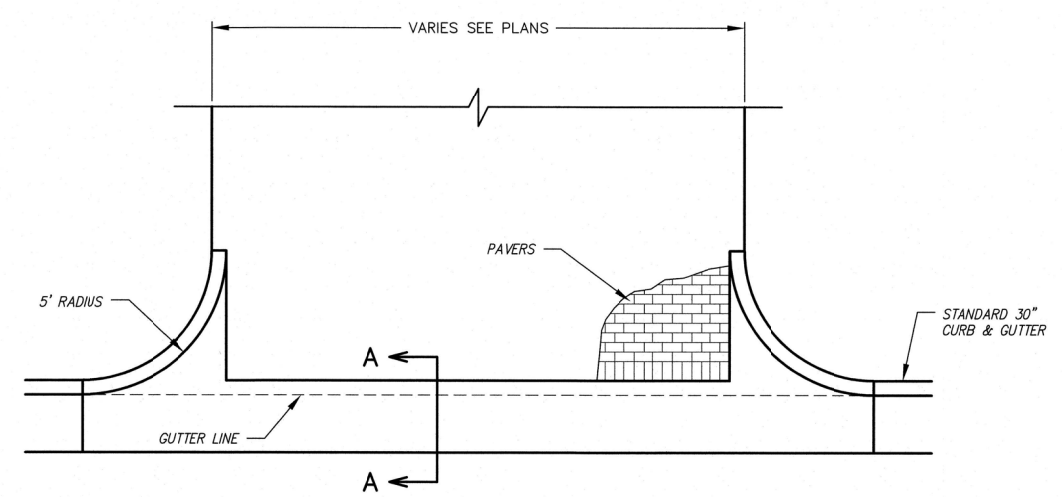
**Residential Concrete Approach**

NOT TO SCALE



**Section A-A**

NOT TO SCALE



**Residential Approach w/ Pavers**

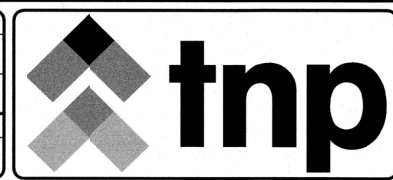
NOT TO SCALE

no.	revision	by	date

**teague nail and perkins, inc**  
 5237 N. Riverside Drive, Suite 100  
 Fort Worth, Texas 76137  
 817.336.5773 ph  
 www.tnpsc.com  
 TX-PELS: ENGR F-230; SURV 10011600, 10011601, 10194381  
 GA-PELS: PEF007431; TX-AE: BR 2673



scale	horiz	As Noted
	vert	N/A
	date	JAN 2022



STATE OF TEXAS  
 GREG D. SANDERS  
 70058  
 REGISTERED PROFESSIONAL ENGINEER  
*Greg D. Sanders*  
 1/31/2022

Town of Westover Hills, Texas  
**Standard Details**  
 Driveway Approach Details

tnp project  
 WRH22016  
 sheet  
**1**  
 of  
 1